

# Martin Guitar MARTIN D18 D28 D35 Heng Review

House of Strings

Martin D35 lateral evaluation! Graphic + video + lossless audio~~

I posted a comparison of D28, HD28, and **D41** before ([Martin guitars](#) Martin mainstream D-type piano --- D28,HD28, D41 evaluation!), now it seems a little rough, and it is not suitable for comparison. So this time, I will post a horizontal comparison of two series, [MARTIN D18 2012](#),**D28**, and **D35**.

First of all, their prices are the same, there is almost no difference, and they belong to the same level, the same type, and are comparable as they were before many people bought the piano. Several pianos are easy to tangle.

Let's talk about the same point first. The three pianos are all D-type pianos, STANDARD series, and the prices are similar. In the United States, the prices are **D18** \$2199, **D28** \$2399, and **D35** \$2499. At the same time, they are also the mainstream models of Martin guitars, and the sales are very high.

The configuration is not too much. The top is SITKA spruce, ebony fingerboard, bridge, 14 frets connected to the box, and standard X-shaped bracing structure, but each piano is different; let's introduce three models of piano difference.

## MARTIN Martin D18 2012 Edition

Since the new model in 2012 came out, the **D18** has been selling very well and has received very high praise abroad. Let's not talk about whether he is very good here; let's see what changes have been made in the new model.

Modifications include:

1. The fingerboard and bridge are changed from rosewood to ebony

It is not clear how much ebony and rosewood fingerboards affect the sound, but it seems that all the best pianos use ebony; GIBSON is an exception. Still, GIBSON also has more expensive ebony versions. FENDER's CUSTOM SHOP also generally uses ebony. For better or worse, at least ebony is more expensive!

2. The overall appearance is a VINTAGE retro design

Including the yellowed panel, headstock LOGO, open knobs, etc., these are all different from the boss D18. Nowadays, many people prefer this retro design, and the overall appearance looks more beautiful.

This can only be regarded as a change, not an improvement.

### 3. The difference in the bracing structure

The bracing structure of the new D18 is standard X-BRACING, which is cut and fronted simultaneously. Be lazy here; COPY a paragraph from the **D42** review posted earlier. . . . After cutting, the sound beam becomes lighter, the damping of the panel vibration will become smaller, it is easier to obtain a larger volume and better elasticity, and the sound will be richer and clearer; the front of the sound beam is the X-shaped force wood direction. The direction of the soundhole moves so that the panel behind the entire sound hole is less bound, and the panel vibrates more freely, which further strengthens these effects.

The difference between the **D18** and the other two is that the back and sides are mahogany. This kind of wood has a more prominent intermediate frequency, and the human ear is the most sensitive to the intermediate frequency.

Suppose the actual volume of the high, middle, and low-frequency bands is the same. In that case, we often feel that the intermediate frequency part is the most prominent, so the mahogany piano is very pleasing to the ear, and the clarity and balance are also better. However, this wood's high and low-frequency extension is not as wide as that of roses, and the relative richness is less.

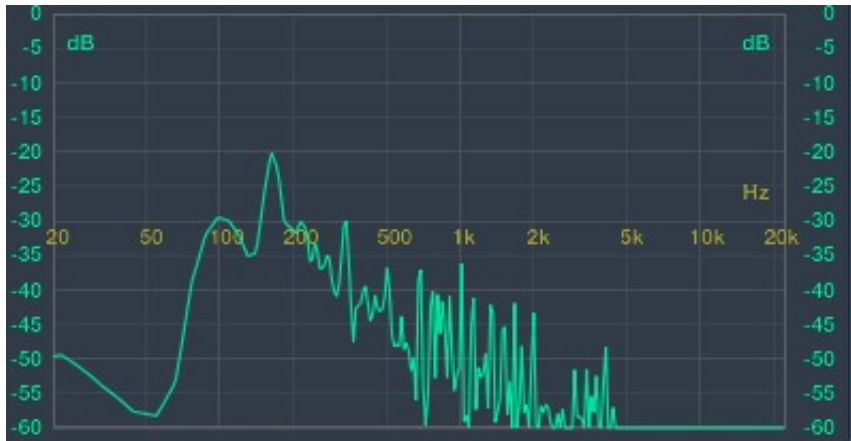
The following picture is the frequency distribution of a short piece of music played by **D18**. The following pictures of **D28** and **D35** also play the same piece of music.

You can see that the mid-frequency of mahogany is prominent, and the high-frequency ductility of rosewood is better because of the Environmental recording problems; the low-frequency part is all kinds of noise.

In addition, this picture can not fully explain the problem because the environment restricts it, and the position of the microphone will change to some extent after each instrument is changed, so it is not very accurate. Still, it can roughly explain the problem and is only for reference.

### **overall evaluation:**

**D18** is a piano with a very long history (it was launched simultaneously as **D28** in 1931). Before the D-type came out, 00018 also existed, so it is very mature and classic, especially after the new model was improved. Many people around the world have praised it. It's a hit, and it's really good value for money, and if you like the sound of mahogany, the **D18** is a smart choice.



## MARTIN Martin D28

Everyone is familiar with the **D28**. It can be said that it is Martin's most famous piano. From its introduction in 1931 to the present, it has always existed as a representative product of Martin. The first D-type guitar introduced to the market was the **MARTIN D28**.

Martin developed a D-type guitar in 1916, but 1931 was the first time Martin launched the official products D1 (**D18**) and D2 from his production line. (**D28**) since then, (the D-type guitar has been popular worldwide, and it has gradually become the standard of the guitar. Until now, there are many guitar labels imitating the **D28**.

The top of the **D28** is SITKA spruce, back and sides rosewood, standard X-BRACING bracing, uncut and front, ebony fretboard, and bridge.

Everyone is very familiar with this piano. It is enough to introduce some configurations briefly. There is countless more detailed information on the Internet. I mainly talk about him.

The **MARTIN D28** came out in 1931. Martin had developed a D-type piano before, but it was not officially listed. **D28** has undergone several major changes since its launch:

1931-D28 released, 12 fretboards with body, ADIRONDACK spruce top, Brazilian rosewood back and sides, bracing cut front

1934-14 fretboard

1938 - Cancellation of forward-moving bracing due to increasing steel string tension

1939 - Neck narrowed, 1-11/16" width at the saddle, same as today's

1944-Cancel the cutting bracing and become STANDARD X-BRACING

1946 - Herringbone wood has

1969-The original 2 series and above are all Brazilian rosewood back and side panels to Indian rosewood

The ADIRONDACK panel was changed to SPRUCE because the ADI panel is relatively hard, light, and tough, so it was used in a large number of military supplies in World War II. The specific time is unknown; it should be about 40 years.

The D28 after 1969 is the same as today's **D28**.

The so-called PRE-WAR pre-war **D28** refers to the **D28** with ADIRONDACK spruce, Brazilian rosewood back and side panels, front-cut sound beam structure, and herringbone pattern wrapping. It must be very valuable~ This is the most expensive. The second is the version after World War II and before 1969.

The version uses SITKA spruce, Brazilian rosewood, and the standard X-shaped bracing structure. The version after 1969 uses SITKA spruce, India Rosewood back and sides, and **D28** with standard X-braced construction.

We mainly talk about the current version of **D28**.

Many people say that the current **D28** is no longer good and that the **D28** before the war is called the real **D28**, and it is a classic. . . . In fact, only a few **D28s** were produced before the war; how many are left? How many people have played it, and how many sounds are left behind. . . .

Here is the data, the output table of **D28**, the front is the year, and the back is the production quantity

1931 1    1936 62

1932 4    1937 148

1933 12   1938 121

1934 73   1939 123

1935 83   1940 134

These are the total number of **D28s** in PRE-WAR. Before the 1969s, there were very few Bamei on the back and the back. I think it isn't very sensible compared with the hundreds of thousands of **D28s** after 1969. The **D28s** before the war was the best Sure, but when it comes to classics, a few people have played them, even if they have heard the real recordings.

The classic status of **D28** was established after 1969. On the one hand, the number of products has increased, and the number of owners has increased. The continuous development of contemporary technology has played a great role, such as TV networks and recording.

With the development of technology, the level of publications is getting higher and higher, and even after the 1970s and 1980s, it entered a period of rapid development.

There is so much good music recorded and passed down after that. Of course, many big people use very precious versions, but more guitarists, fans, and records are regular versions of **D28**. Because of the recognition and works of these people that **D28** has become a classic.

In short, **MARTIN D28** is a very representative and classic work of art. Its history and reputation are enough for us to choose with confidence.

If you are hesitant to buy a **D28** at a similar price, it can be said to be a Safe choice. There are countless references on the Internet regarding his tone, and the popularity rate is very high. It is not difficult to find a way to try it out.



## MARTIN Martin D35

**Martin D35** was produced in 1965; it is also SITKA spruce top, rosewood back, and side; the difference is that he's back is three-piece, and the tone of the two-piece back is different. In appearance, the

fingerboard of the **D35** has a white edge, which can easily be distinguished from the **D28**.

In addition, although his bracing structure is also a standard X-shaped bracing, the size of the force wood is different. Generally, the **D28** is 5/16", and the **D35** is 1/4".

The total output of **D35** is about 10W, which is only the **D28**. In addition, the D18 is also nearly 10W. The three pianos mentioned today are the top three in Martin's output. . . . far more than all other models. The evaluation of **D35** has always been very high. There are many Martin fans abroad. Many people own multiple Martin pianos. Most people are surprised by the excellence of **D35**. Many **D35** players in China also like this piano very much, including Some professional guitarists' evaluation of **D35** is generally a super high score!

I had some prejudice against the **D35** at first. I always felt that the backplane of the three-piece is not as good-looking as the two-piece (Martin three-series tears...) But the more I contacted it, the more I changed my mind.

The difference in material and structure between **D28** and **D35** must be reflected in the difference in tone. Compared with the AB of the **D28**, I feel that the **D35** has more sheer expressive power and better dynamic response, but it lacks the power of the **D28**.

If I have to decide the winner, I do prefer the **D35** a little bit in terms of sound. . . . However, the double spelling of the **D28** and the diamond cutting of the neck are more in line with my liking~!

